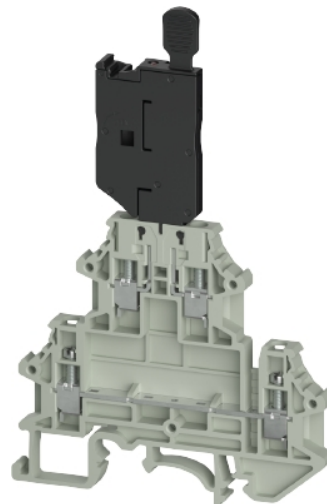


## Data sheet

Commercial Art.No.: 5D.S03.4755.0

fuse terminal WTN 2.5 E FSI60 5X20

fuse terminal WTN 2.5 E FSI60 5X20 rated voltage 60 V, rated current 6.3 A, screw connection, number of levels 2, number of clamp positions per level 2, nominal cross section 2.5 mm<sup>2</sup>, connectable conductor cross section fine stranded without cable end sleeve 0,34mm<sup>2</sup> - 2,5mm<sup>2</sup>, mounting method DIN rail (top hat rail), color grey, width/grid dimension 6.2 mm, inflammability class of insulation material acc. with ul94 V0



Commercial Art.No.	5D.S03.4755.0
EAN	4049088724619
Order Unit	50

certificates / approvals



## Technical data

### general

nominal cross section	2.5 mm <sup>2</sup>
color	grey
number of levels	2
number of clamp positions per level	2
width/grid dimension	6.2 mm
insulating housing	PA
inflammability class of insulation material acc. with UL94	V0
mounting method	DIN rail (top hat rail)

### technical data

rated current	6.3 A
rated voltage	60 V
rated impulse voltage	4 kV
pollution degree	3
closing plate required	yes
type of insulation material	thermoplastic
length	71.5 mm
width	6.2 mm

### connection data

connection type	screw connection
connection type 1	screw connection

minimum cross section solid	0.34 mm <sup>2</sup>
maximum cross section solid	4 mm <sup>2</sup>
minimum cross section fine stranded	0.34 mm <sup>2</sup>
maximum cross section fine stranded	2.5 mm <sup>2</sup>
minumum conductor cross section (flex., stranded) with cable end sleeve	0.25 mm <sup>2</sup>
maximum conductor cross section (flex., stranded) with cable end sleeve	2.5 mm <sup>2</sup>
wire strip length	10 mm
torque conductor mounting	0.4 Nm

#### technical data UL/CSA

cross section UL	22-12 AWG
voltage UL	60 V
current factory wiring	10 A
current field wiring	10 A
cross section CSA	22-12 AWG
voltage CSA	60 V
current CSA	10 A

#### classification

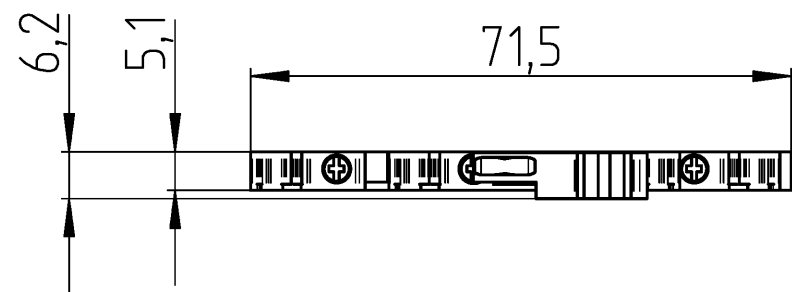
ETIM 9.0	EC000899
----------	----------

#### product compliance

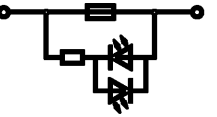
REACH-SVHC conformity status	compliant
------------------------------	-----------

## Accessories

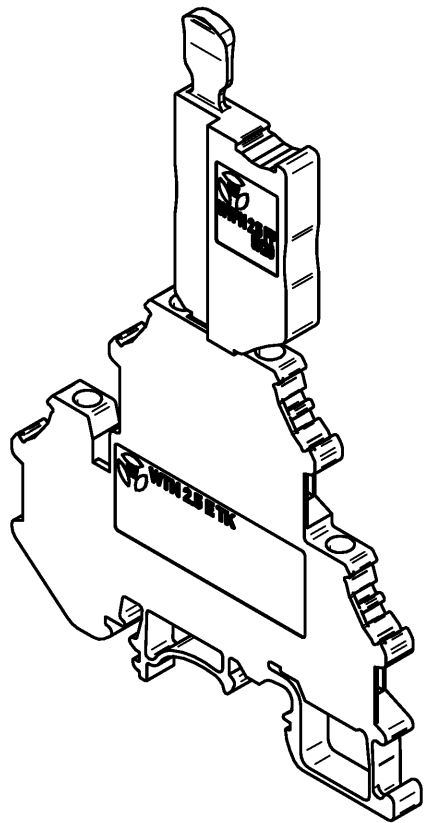
Commercial Art.No.:	Article-type description:	Description:
0D.S03.3227.5	jumper bar IVB WTN 2,5-2	jumper bar IVB WTN 2,5-2 modular spacing 5.1 mm, insulated yes, number of poles 2, color red, mounting method pluggable, inflammability class of insulation material acc. with ul94 V0
0D.S03.3327.5	jumper bar IVB WTN 2,5-3	jumper bar IVB WTN 2,5-3 modular spacing 5.1 mm, insulated yes, number of poles 3, color red, mounting method pluggable, inflammability class of insulation material acc. with ul94 V0
0D.S03.3427.5	jumper bar IVB WTN 2,5-4	jumper bar IVB WTN 2,5-4 modular spacing 5.1 mm, insulated yes, number of poles 4, color red, mounting method pluggable, inflammability class of insulation material acc. with ul94 V0
0D.S03.3527.5	jumper bar IVB WTN 2,5-5	jumper bar IVB WTN 2,5-5 modular spacing 5.1 mm, insulated yes, number of poles 5, color red, mounting method pluggable, inflammability class of insulation material acc. with ul94 V0
0D.S03.4027.5	jumper bar IVB WTN 2,5-10	jumper bar IVB WTN 2,5-10 modular spacing 5.1 mm, insulated yes, number of poles 10, color red, mounting method pluggable, inflammability class of insulation material acc. with ul94 V0
0D.S03.5027.5	jumper bar IVB WTN 2,5-20	jumper bar IVB WTN 2,5-20 modular spacing 5.1 mm, insulated yes, number of poles 20, color red, mounting method pluggable, inflammability class of insulation material acc. with ul94 V0
0D.S03.2355.0	end plate APWTN 2.5/4 E	
0D.202.7281.0	marking strips WML 9.8/60	marking strips WML 9.8/60 color white
0D.203.7056.0	marking plate WMP 5,10-10	marking plate WMP 5,10-10 modular spacing 5.1 mm, color white



- Hutschiene EN 60715-35x7,5  
/mounting rail EN 60715-35x7,5
- Hutschiene EN 60715-35x15  
/mounting rail EN 60715-35x15



1:1




Weitere Daten siehe KATALOG oder eKatalog additional data see CATALOG or eCATALOG	<a href="http://www.wieland-electric.com">www.wieland-electric.com</a> <a href="http://eshop.wieland-electric.com">eshop.wieland-electric.com</a>
--	--

Tolerierung Size ISO 14405 ☺ / Tolerance system Size ISO 14405 ☺. (This ISO-standard describes the envelope principle. According to the envelope principle the deviations of form and parallelism are limited by the size tolerances).	ja/yes ☑ Stoffverbots- und Deklarationsliste nach WN 5020.010 ist einzuhalten. Conformity with Wieland document WN 5020.010 e (list of prohibited / declarable hazardous substances) to be declared!
---	---

Freitoleranz nach General tolerance	CAD - Zeichnung, keine manuellen Änderungen CAD - drawing, no manual modifications allowed	1. Verwendung: First Use:	Blatt: 1 von 1 Sheet: 1 of 1
--	---	------------------------------	---------------------------------

	/		Werkstoff / Material		Tag/Date	Name	T	Zeichnung Nr. / Drawing No.	Index
	/			gezeichnet drawn	18.09.2025	Sachs (extern)			
	/			Elektronische Freigabe Electronic Release					
	/								
	/	Maßstab / Scale		Maße in mm / Dimensions are in mm					
	/	1:1							

Bestell-Nr. /order no.	Typ /type	Farbe /colour	VPE: packaging unit:
5D.S03.4655.0	WTN 2.5 E FSI 5X20	grau / grey	50
5D.S03.4755.0	WTN 2.5 E FSI60 5X20	grau / grey	

	/	Vol.	mm <sup>3</sup>	Dfl./Srf.	mm <sup>2</sup>	Ersatz für / Replacement for:	
	/					Type	Benennung/Title
	/						SICHERUNGSKLEMME
Index	Datum / Blatt Date / Sheet		<b>wieland</b>				fuse terminal
Änderung / Revision							